



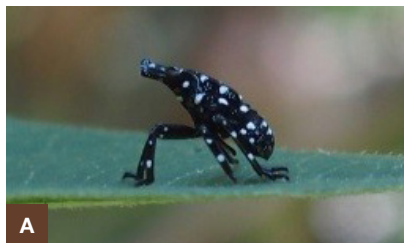
How You Can Comply with the Spotted Lanternfly Quarantine Regulations

There is a new invasive insect in southeastern Pennsylvania, *Lycorma delicatula*, commonly known as the spotted lanternfly (SLF). This insect has the potential to be harmful to grapevines, hops, tree fruit, and trees. To try to limit the spread of SLF, the Pennsylvania Department of Agriculture (PDA) has established a quarantine order in counties where SLF already exists. All residents and businesses must comply with the regulations. PDA has the authority to fine anyone who willfully violates the quarantine order.

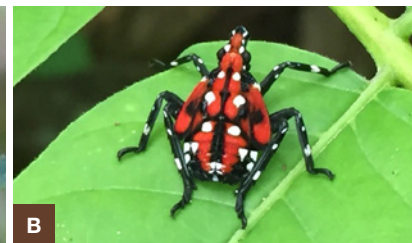
Here are some tips to help you avoid spreading SLF and be in compliance with the regulations.

1. Learn about which counties are included in the quarantine order. The area of the quarantine will continue to change as new discoveries are made. As you move within and out of the quarantined area, you must make sure that you are not transporting any living life stages of the SLF to new areas. If you believe you have discovered SLF, report your discovery online at extension.psu.edu/spotted-lanternfly or call 1-888-4BAD-FLY (1-888-422-3359). The most recent quarantine map can always be found at extension.psu.edu/spotted-lanternfly.

2. Learn about what SLF looks like in every stage of its development throughout the year.



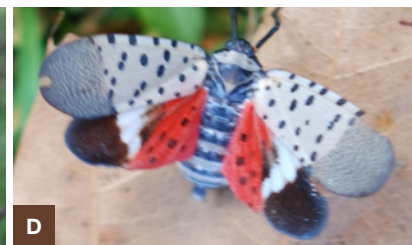
A



B



C



D



E



F

- A. The young nymphs are black with white spots and can be present from April through July.
- B. The older nymphs are black and red with white spots and can be present from July through September.
- C. The adults (shown at rest) can be present from July until late December. The adults are 1 to 1¼ inches long.
- D. Adults will show their red underwings when disturbed.
- E. The egg masses can be on trees, rocks, or any other solid object and can be present from September through June.
- F. The empty remains of the eggs that have hatched can be found at any time of the year.

To see additional pictures of SLF, go to extension.psu.edu/spotted-lanternfly-what-to-look-for

3. Avoid parking or storing things under trees in infested areas. The female SLF often lays eggs on objects that are under the trees she is feeding on. You should try to change your habits about where you park. Park vehicles in open fields, away from tree lines, or in a closed garage if possible. You should not store things that you might need to move to outside of the quarantined area under infested trees. These things include firewood, tools, construction supplies, equipment, or any other solid object.

4. Inspect all items that you need to move from within the quarantined area to areas outside the quarantined area. You should remove and destroy any SLF that you find before you move the item. Also check all vehicles, trailers, campers, and equipment, including around windshield wipers, grills, wheel wells, and truck beds. Inspect plant material, woody debris, lawn furniture, construction supplies, tools, and all solid objects. Destroy mobile stages of SLF by crushing them. Destroy eggs by smashing them or scraping them into a container of rubbing alcohol.

5. All businesses should get a permit issued through PDA. A permit provides evidence that you have completed training about how to follow the rules of the quarantine order and you agree to do all you can to ensure the items you transport are not carrying SLF. You will receive documentation for your vehicles to show that you have obtained the SLF permit from PDA. To obtain a permit, take the training online at extension.psu.edu/spotted-lanternfly. This is a “train the trainer” course to train designated employees (usually an owner, manager, or supervisor) within a company on how to comply with the quarantine regulations. The designated employee must then train fellow employees. In-person training and questions may be directed to SLFPermit@PA.gov.

6. Use the checklist for residents if you need to move items that are not included in a permit through a business. This checklist is a legal document to show that you have inspected the item, removed and destroyed any living life stages of SLF, and are in compliance. You can print the checklist, fill it out, sign it, and take it with you when you move the item(s). The checklist is available at extension.psu.edu/spotted-lanternfly.

7. If you sell plants, have them inspected by PDA to receive a phytosanitary certificate. Pennsylvania law requires horticultural businesses that produce and/or sell plants to have either a Nursery/Greenhouse License or a Nursery Dealer’s License. When you have a license, plant inspectors will check your plants. For more information, see www.agriculture.pa.gov/Plants_Land_Water/PlantIndustry/plant-health/Phytosanitary/Pages/default.aspx.

8. If you sell and/or produce mulch, you must use specific practices to ensure it does not harbor SLF. The specific practices are outlined at extension.psu.edu/spotted-lanternfly under Spotted Lanternfly Management. You will need to enter into a compliance agreement with PDA.

These regulations do not apply to grass clippings or autumn leaf collection. We believe that the spotted lanternfly does not lay eggs on these lightweight objects. Clippings and leaves may be moved from the quarantined area if necessary, as long as the truck and/or trailer you are hauling them with has been checked.

The regulations of the quarantine order are in place to prevent the spotted lanternfly from being spread by people. This pest is not just a concern to agricultural and horticultural professionals, it is a community concern. To protect the agriculture industry, we need everyone to be aware of the best practices to avoid spreading the spotted lanternfly and use these practices in their daily activities.

You can find the official quarantine order, a summary in plain language, and more information at www.agriculture.pa.gov/Plants_Land_Water/PlantIndustry/Entomology/spotted_lanternfly/quarantine/Pages/default.aspx.

If you do not have access to the Internet, contact the Penn State Extension office in your county to receive copies of the checklist for residents or to access the online permit training.

Prepared by Emelie Swackhamer, horticulture extension educator.

Photo D: PA Department of Agriculture; all other photos: Emelie Swackhamer.

extension.psu.edu

Penn State College of Agricultural Sciences research and extension programs are funded in part by Pennsylvania counties, the Commonwealth of Pennsylvania, and the U.S. Department of Agriculture.

Where trade names appear, no discrimination is intended, and no endorsement by Penn State Extension is implied.

This publication is available in alternative media on request.

Penn State is an equal opportunity, affirmative action employer, and is committed to providing employment opportunities to all qualified applicants without regard to race, color, religion, age, sex, sexual orientation, gender identity, national origin, disability, or protected veteran status.

Produced by Ag Communications and Marketing

© The Pennsylvania State University 2018

Code EE0232 9/18pod



**PennState
Extension**

Certificate of Completion

This is to certify that

Brad Redden

successfully completed

OLC-1054

Spotted Lanternfly Permit Training

an online course offered by Penn State Extension

June 12, 2019

Jeffrey Hyde

Jeffrey Hyde
Director
Penn State Extension

Richard Roush

Richard Roush
Dean
College of Agricultural
Sciences

Verify the authenticity of this certificate at

<https://learn.extension.psu.edu/certificates/user/14839/course/course-v1:PennStateExtension+OLC-1054+2018>



Spotted Lanternfly

Certificate of Inspection



(A) Egg Mass:
September to May

(B) Early Nymph:
April to July

(C) Late Nymph:
July to September

(D) Adult (Wings Closed):
July to December

(E) Adult (Wings Open):
July to December

Prior to departing a location within the quarantine zone, inspect your vehicle and/or trailer, cargo and exterior equipment for Spotted Lanternfly (SLF). If you locate evidence of a SLF, you must destroy it.

REPORT SIGHTINGS TO: 1-888-422-3359 or extension.psu.edu/spotted-lanternfly

SPOTTED LANTERNFLY VEHICLE CHECK:

Driver Name _____

Date	Time	Truck	Trailer	Quarantine Location	SLF Found	SLF Destroyed	SLF Not Found

By signing this checklist, I am confirming that I have inspected my vehicle for SLF prior to traveling within or out of the quarantine zone.

SIGNATURE: _____ DATE: _____

extension.psu.edu

Penn State College of Agricultural Sciences research and extension programs are funded in part by Pennsylvania counties, the Commonwealth of Pennsylvania, and the U.S. Department of Agriculture. Where trade names appear, no discrimination is intended, and no endorsement by Penn State Extension is implied. This publication is available in alternative media on request. Penn State is an equal opportunity, affirmative action employer, and is committed to providing employment opportunities to all qualified applicants without regard to race, color, religion, age, sex, sexual orientation, gender identity, national origin, disability or protected veteran status.



Spotted Lanternfly Quarantine Checklist for Vehicle Inspection

IMPORTANT: Before traveling from the quarantine area, check for spotted lanternfly egg masses, adults, and nymphs. Make sure your vehicle and all transported items are pest free. Help stop this pest from spreading!

On May 26, 2018, a new Spotted Lanternfly Order of Quarantine and Treatment was published in the PA Bulletin. The Pennsylvania Department of Agriculture (PDA) established the quarantine order to stop this pest from moving out of the current quarantine zone. PDA is also trying to minimize the movement of SLF within the quarantine zone from areas with higher populations into areas with low to no populations.

The current quarantine zone encompasses these counties: **Berks, Bucks, Carbon, Chester, Dauphin, Delaware, Lancaster, Lebanon, Lehigh, Monroe, Montgomery, Northampton, Philadelphia and Schuylkill.** Travel within or out of those counties requires a permit and vehicles must be inspected.

TRAVEL INFORMATION

DATE: _____

DRIVER: _____

VEHICLE: _____

INDICATE COUNTIES TRAVELING IN:

Berks	Lebanon	Other
Bucks	Lehigh	Other
Carbon	Monroe	Other
Chester	Montgomery	Other
Dauphin	Northampton	
Delaware	Philadelphia	
Lancaster	Schuylkill	

INSPECTION

The following is a list of items / places that may harbor SLF. This list is not all-inclusive but should serve as a starting point in actively inspecting for SLF.

- Vehicles (Interior)
- Vehicles (Exterior)
- Truck Beds / Caps
- Wheel Wells
- Trailers
- Tool Boxes
- Dollies
- Pallets
- Storage Bins
- Storage Crates

Please see reverse side for life cycle information.

Depending on the time of year, check for both live insects and / or egg masses. If you find live insects, kill them. If you find egg masses, remove and destroy them.

When inspection is complete, sign and date the reverse side.

SPOTTED LANTERNFLY QUARANTINE CHECKLIST FOR VEHICLE INSPECTION

IMPORTANT: Before traveling from the quarantine area, check for spotted lanternfly egg masses, adults, and nymphs. Make sure your vehicle and all transported items are pest free. *Help stop this pest from spreading!*

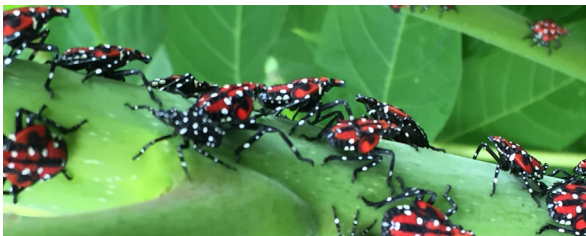
If you find any live insects, kill them. If you find any egg masses, scrape them into a plastic bag, seal the bag, and dispose of it in the garbage.



Adult spotted lanternfly, present in autumn months.



Spotted lanternfly nymphs, present in spring and summer months.



Spotted lanternfly egg mass (outlined in red). Egg masses are present in autumn and winter months, blending in with their surroundings.

By signing this checklist, I am confirming that I have inspected my vehicle and those items I am moving from the Spotted Lanternfly quarantine area, and do not see any egg masses or insects in or on anything I am moving.

Signature: _____ **Date:** _____

For more information, visit the websites of Pennsylvania Department of Agriculture and Penn State Extension.

extension.psu.edu

Penn State College of Agricultural Sciences research and extension programs are funded in part by Pennsylvania counties, the Commonwealth of Pennsylvania, and the U.S. Department of Agriculture. Where trade names appear, no discrimination is intended, and no endorsement by Penn State Extension is implied.

This publication is available in alternative media on request.

Penn State is an equal opportunity, affirmative action employer, and is committed to providing employment opportunities to all qualified applicants without regard to race, color, religion, age, sex, sexual orientation, gender identity, national origin, disability or protected veteran status.